



# ALLIANCE BIO EXPERTISE

DISCOVER **THE MICROBIOLOGY AUTOMATION**

- *Automated Media Preparation*
- *Food Sample Preparation*
- *Air & Surface Sampling*

 **2026**

[alliance-bio-expertise.com](http://alliance-bio-expertise.com)   



ALLIANCE  
BIO EXPERTISE

## AUTOMATED MEDIA PREPARATION

### PREPARE

• Benefits of the automation .....	5
• <b>MEDIAWEL 10®</b> - Media Preparator 10L .....	6
Features .....	7 - 8
• <b>MEDIAWEL 30®</b> - Media Preparator 30L .....	9
Features .....	10 - 11
• <b>MEDIAWEL 50®</b> - Media Preparator 50L .....	12
Features .....	13 - 14
• Traceability .....	15

### DISPENSE

• <b>DISTRIWEL 440®</b> - Petri Dish Filler .....	16
Features .....	17 - 18
• <b>MINIMA®</b> - Petri Dish Wrapper .....	19
• <b>DOSYWEL UPI®</b> - Peristaltic Pump .....	20 - 21
Features .....	22 - 23
• <b>POLYWEL UP®</b> - Tubes and Bottles Filler .....	24 - 25
Features .....	26 - 27

### FEED

• <b>MEDIAFEED®</b> - Dehydrated Media .....	28 - 33
--	---------

# TABLE OF CONTENT

## FOOD SAMPLE PREPARATION

### DILUTE

- **DILUWEL UP!**<sup>®</sup> - Gravimetric Dilutor ..... 35 - 36  
Features ..... 37 - 38
- **BAGGYWEL**<sup>®</sup> - Broth Bags ..... 39

### HOMOGENIZE

- **MIXWEL UP!**<sup>®</sup> - Lab Blenders ..... 40 - 41  
Features ..... 42 - 43
- **MIXBAGS**<sup>®</sup> - Blender Bags ..... 44

## AIR & SURFACE SAMPLING

- **AIRWEL**<sup>®</sup> - Air samplers ..... 46  
Features ..... 47 - 48
- **BIOCONTACT**<sup>®</sup> - Sampler for surface monitoring ..... 49

**TECHNICAL SUPPORT** ..... 50

**JOIN THE COMMUNITY** ..... 51 - 53

# **AUTOMATED MEDIA PREPARATION**



1

## Prepare the media

Diluent & Agar



Compliant with :

ISO  
11133

ISO  
7218

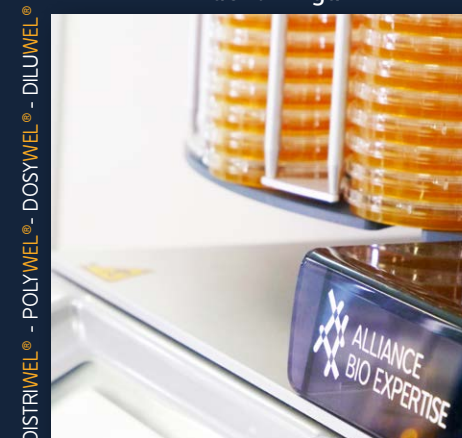
GMP

*ISO 7218 - 5.7.1 : A media preparator is primarily designed for the sterilization of large volumes of media (>1L). It consists of a heating vessel, a water jacket, and a continuous agitation device [...] and is equipped with a thermometer, a pressure gauge, a timer, and a safety valve [...] with a safety lock to prevent opening above 80°C.*

2

## Distribute the media

Diluent & Agar



## ALL IN ONE MEDIA PREPARATION :

### SIMPLIFIED PROCESS



VS

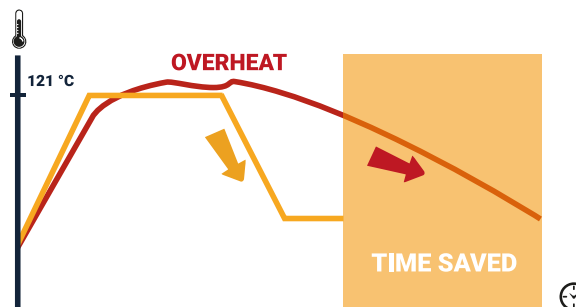


AUTOCLAVE



MEDIWEL®

### FAST COOLING SYSTEM



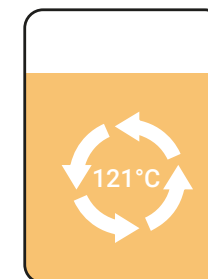
AUTOCLAVE —

MEDIWEL® —

### BETTER HOMOGENEITY



VS



AUTOCLAVE

MEDIWEL®

# MEDIAWEL 10<sup>®</sup>

NEW GENERATION MEDIA PREPARATOR

## High performances :

- Standardized media : 150 programs available
- Temperature : 16 - 125 °C (± 0.5 °C)
- Optimum media homogeneity
- From 1 to 10 liters of media
- Cycle time : 50 - 75 min\*

## Secure process :

- Traceability : e-TRACE<sup>®</sup> technology
- 0.2 µm filtration : Bactystopper<sup>®</sup>
- Safety cover & lid : locked above 80°C
- Audio & multicolored visual alarm



## Ergonomic :

- Easy to move : trolley available
- Designed for user comfort
- User friendly interface
- Easy cleaning

\* 2-step cycle: sterilization at 121°C for 15 minutes,  
followed by dispensing at 42°C







## Perfect homogeneity

**Double magnetic stirring blade :**  
Large surface for an optimum  
temperature & consistence  
homogeneity



## Safety first

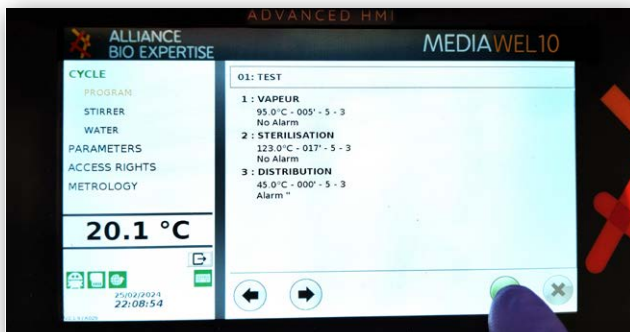
The device is locked above 80°C  
with a special lid with 12 hooks.  
Safety pressure valve.  
ASME certification



## Optimised mobility



Disengage and move the unit in  
seconds with the **Quick Water  
Connection Kit**. Simply slide it under  
the bench thanks to the trolley !



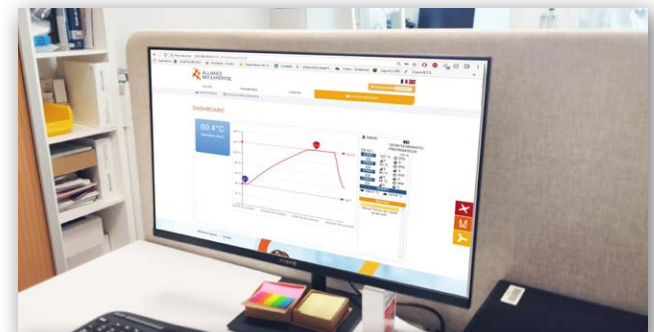
## User friendly

Intuitive 7" glove friendly  
touchscreen and multicolored  
led indicators



## Easy cleaning

Easy to remove and lightweight  
bucket: 1530g.  
**Ideal for cleaning.**



## Full Traceability



Easy export of data via USB  
interface, ticket printer and real  
time data monitoring **Labpage®**.  
Audit trail compliant with  
21 CFR Part 11.

**Delivered with the MEDIAWEL 10 :** USB key with user manual and quality report, Bucket, Double magnetic stirrer, Sampling tube (MEDW2103), Drain plug, Draining basin, Stirrer bearing kit, Bactystopper - Calibrated sterile carded cotton x50 (MEDW3003), Inlet and outlet water tubing (4 m) + 4 tubing clamps (MEDW4012), 3 Months free access to «Real time data monitoring LICENSE»

## TECHNICAL DATA SHEET

Capacity	1-10L
Sterilization temperature	From 16 to 125 °C
Sterilization time	From 1 to 99 min
Distribution temperature	From 16 to 80°C
Temperature accuracy	± 0.5°C
Remaining volume	15 ml
Addition cap	✓ and the possibility to use septum
Traceability	eTRACE® Module integrated, USB data export (PDF/CSV)
Traceability WIFI/Ethernet (optional)	Labpage® dashboard. Real time data monitoring, data storage on SD card (up to 10 000 cycles)
CFR21 Part11	User management with password, audit trail, data integrity (non-erasable, non-editable data) & automatic operator logout
Lid locking	Easy and safe (with 12 hooks)
Delayed start	✓
Temperature probe	1 PT100 probe
Pressure monitoring	1 pressure gauge + 1 pressure switch
Safety pressure release	1.7 Bar safety valve
Adaptable dispensers	8 mm
Continuous homogenization	✓
Touchscreen	Tactile, LCD 7" glove friendly
Alarm	Audio and multicolored visual alarm
Compacity	Easily slides under the bench, optional trolley available
Robustness	Antishock body (ABS PC PLASTIC)
Bucket and vessel	Vessel : stainless steel AISI 316L - Bucket : stainless steel AISI 304
Programs	150
Dimensions (L x W x H )	500mm x 515mm x 620mm
Trolley dimensions (L x W x H )	645mm x 660mm x 705mm
Weight	63kg
Power supply	230V (+/- 10%) – 16A – 50/60Hz – 3600 W
Country of origin	France - European Union
Warranty	1 year

# MEDIAWEL 10®

**ABE**  
*LIVE*

Watch a full demonstration :





# MEDIAWEL 30<sup>®</sup>

NEW GENERATION MEDIA PREPARATOR

## High performances :

- Standardized media : 150 programs available
- Temperature : 16 - 125 °C ( $\pm 0.5$  °C)
- Optimum media homogeneity
- From 2.5 to 30 liters of media
- Cycle time : 75 - 90 min\*

\* 2-step cycle: sterilization at 121 °C for 15 minutes,  
followed by dispensing at 42 °C



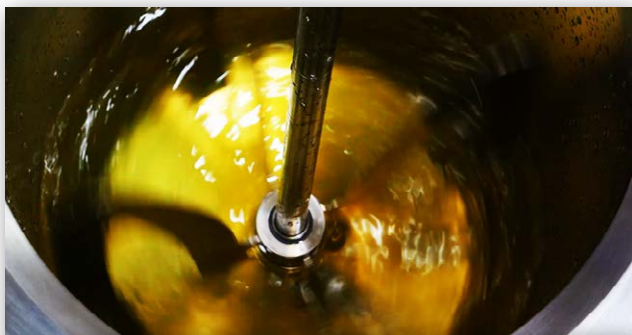
## Secure process :

- Traceability : e-TRACE<sup>®</sup> technology
- 0.2  $\mu$ m filtration : Bactystopper<sup>®</sup>
- Safety valve for pressure release
- Audio & multicolored visual alarm
- Antishock body : ABS PC PLASTIC

## Ergonomic :

- Easy to move : 4 large medical wheels
- Designed for user comfort
- User friendly interface
- Easy cleaning





## Better homogeneity

**Quadruple magnetic stirring blade :**  
Large surface for an optimum  
temperature homogeneity



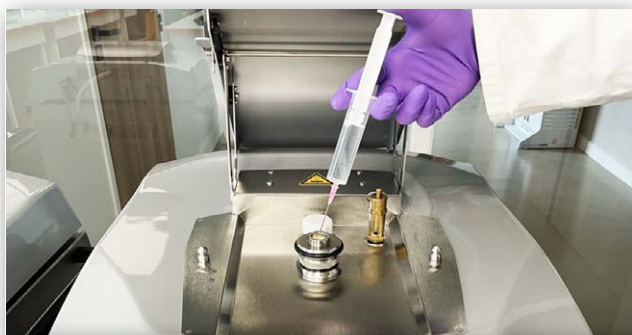
## Robust design

The equipment body is  
shock-resistant thanks to its  
ABS PC PLASTIC design



## Optimised cycle preparation

Avoid volatile powder with the Dust  
Cover & speed up the water filling  
with Automatic Doser



## Supplement step

All MEDIAWEL can fully integrate  
supplement addition : specific  
supplement programs & specific  
addition caps with or without septum



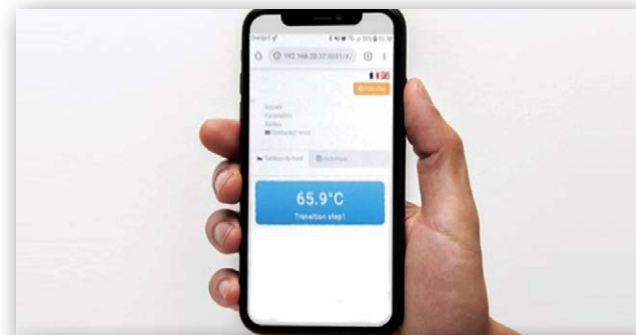
## Easy cleaning

**No heavy vessel to lift !**  
Fast draining mechanism and smooth  
surfaces with no right angles



## Full Traceability

Easy export of data via USB  
interface, ticket printer and real  
time data monitoring Labpage®.  
Audit trail compliant with  
21 CFR Part 11.



**Delivered with the MEDIAWEL 30 :** User Manual, Control certificate, Large magnetic stirrer (MEDW2008), Sampling tube (MEDW2009), Draining plug (MEDW2010), Sampling nozzle seals x2 (MEDW4011), Sampling nozzles x2 (MEDW2003 : Ø 12mm + MEDW2004: Ø 6.4mm), Inlet and outlet water tubing (4 m) + 4 tubing clamps (MEDW4012), Decompression filters x2 (MEDW3001), Bactystopper - Calibrated sterile carded cotton x50 (MEDW3003), Sliding washer stirrer axis x2 (MEDW4003), Sampling nozzle seals x2 (MEDW4011), USB key, 3 Months free access to the Labpage «Real time data monitoring LICENCE»

## TECHNICAL DATA SHEET

Capacity	From 2.5 to 30 liters
Sterilization temperature	From 16 to 125°C
Sterilization time	From 1 to 99 min
Distribution temperature	From 16 to 80°C
Temperature accuracy	± 0.5°C
Remaining volume	<100ml
Addition cap	✓ and the possibility to use septum
Traceability	eTRACE® Module integrated, USB data export (PDF/CSV)
Traceability WIFI/Ethernet (optional)	Labpage® dashboard. Real time data monitoring, data storage on SD card (up to 10 000 cycles)
CFR21 Part11	User management with password, audit trail, data integrity (non-erasable, non-editable data) & automatic operator logout
Temperature probe	3 probes (1 standard, 1 in option and 1 for calibration)
Safety pressure release	1.7 Bar safety valve
Dispensing port	Adapters for tubes of 6.4mm /12mm (8mm and 17mm available in option)
Continuous homogenization	✓
Touchscreen	Tactile, LCD 7" glove friendly
Alarm	Audio and multicolored visual alarm
Cleaning	Trapdoor, easy access to the vessel
Mobility	Stable and easy to move : 4 large medical wheels
Robustness	Antishock body (ABS PC PLASTIC)
Vessel	Stainless steel AISI 316L
Programs	150
Weight	154kg
Dimensions (L x W x H)	585 x 735 x 1053mm
Power supply	<b>MEDW1001</b> : 400V +/- 10% three-phases (18A max per phase), 50/60 Hz 9000W +/-10% <b>MEDW1002</b> : 208V +/- 10% three-phases (28A max per phase), 50/60 Hz 7400W +/-10% (for 110/120V countries only, such as US, Canada, Central America)
Country of origin	France - European Union
Warranty	1 year

# MEDIAWEL 30®

**MEDIAWEL® key points in video :**



# MEDIAWEL 50<sup>®</sup>

NEW GENERATION MEDIA PREPARATOR

## High performances :

- Standardized media : 150 programs available
- Temperature : 16 - 125 °C (± 0.5 °C)
- Optimum media homogeneity
- From 5 to 50 liters of media
- Cycle time : 75 - 90 min\*

## Ergonomic :

- Easy to move : 4 large medical wheels
- Designed for user comfort
- User friendly interface
- Easy cleaning

\* 2-step cycle: sterilization at 121 °C for 15 minutes,  
followed by dispensing at 42 °C



## Secure process :

- Traceability : e-TRACE<sup>®</sup> technology
- Bacteria filtration : Bactystopper<sup>®</sup>
- Safety valve for pressure release
- Audio & multicolored visual alarm
- Antishock body : ABS PC PLASTIC







## Better homogeneity

**Double magnetic stirring blade :**  
Large surface for an optimum  
temperature homogeneity



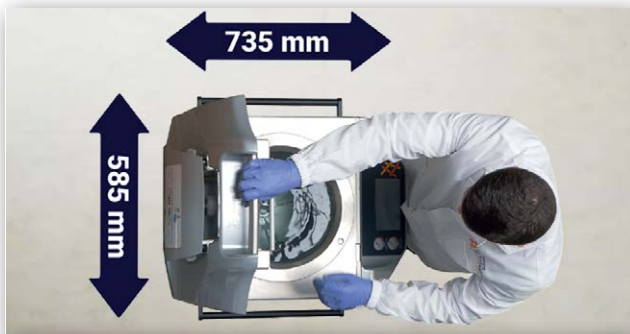
## Make it faster

Reach the perfect media distribution  
temperature quickly with  
the fast cooling system



## No waste media

The remaining volume is **<100 mL**



## Optimized compacity



Same footprint as a 30L media  
preparator ! Very good magnability  
with medical wheels

## User friendly

**Intuitive 7" glove friendly  
touchscreen** and multicolored  
led indicators



## Full Traceability



Easy export of data via USB  
interface, ticket printer and real  
time data monitoring Labpage®.  
Audit trail compliant with  
21 CFR Part 11.



**Delivered with the MEDIAWEL 50 :** USB stick with user Manual, control certificate, large magnetic stirrer (MEDW2008), sampling tube (MEDW2009), draining plug (MEDW2028), sampling nozzle seals x2 (MEDW4011), sampling nozzles x2 (MEDW2003 : Ø 12mm + MEDW2004: Ø 6.4mm), inlet and outlet water tubing (4 m) + 4 tubing clamps (MEDW4012), decompression filters x2 (MEDW3001), Bactystopper - calibrated sterile carded cotton x50 (MEDW3003), sliding washer stirrer axis x2 (MEDW4003), 3 Months free access to the Labpage «Real time data monitoring LICENCE»

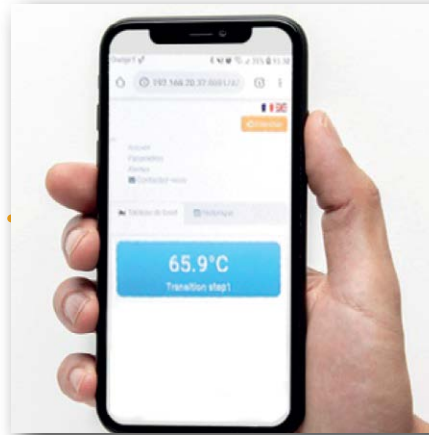
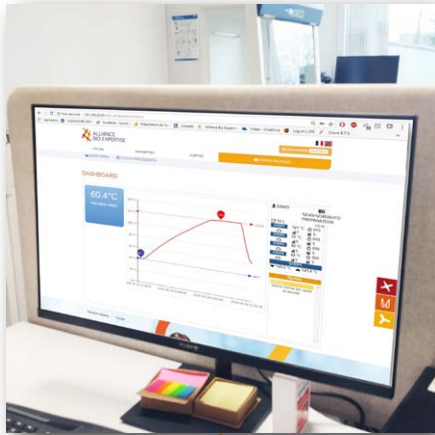
## TECHNICAL DATA SHEET

Capacity	From 5 to 50 liters
Sterilization temperature	From 16 to 125°C
Sterilization time	From 1 to 99 min
Distribution temperature	From 16 to 80°C
Temperature accuracy	± 0.5°C
Remaining volume	<100ml
Addition cap	✓ and the possibility to use septum
Traceability	eTRACE® Module integrated, USB data export (PDF/CSV)
Traceability WIFI/Ethernet (optional)	Labpage® dashboard. Real time data monitoring, data storage on SD card (up to 10 000 cycles)
CFR21 Part11	User management with password, audit trail, data integrity (non-erasable, non-editable data) & automatic operator logout
Temperature probe	3 probes (1 standard, 1 in option and 1 for calibration)
Safety pressure release	1.7 Bar safety valve
Dispensing port	Adapters for tubes of 6.4mm /12mm (8mm and 17mm available in option)
Continuous homogenization	✓
Touchscreen	Tactile, LCD 7" glove friendly
Alarm	Audio and multicolored visual alarm
Cleaning	Bottom drainage / cleaning evacuation
Mobility	Stable and easy to move : 4 large medical wheels
Robustness	Antishock body (ABS PC PLASTIC)
Vessel	Stainless steel AISI 316L
Programs	150
Weight	178kg
Dimensions (L x W x H)	585 x 735 x 1073 mm
Power supply	<b>MEDW1050</b> : 400V +/- 10%, three-phases (31A max per phase), 50/60 Hz, 18700W +/- 10% <b>MEDW1051</b> : 208V +/- 10%, three-phases (46A max per phase), 50/60 Hz, 14500W +/- 10% (for 110/120V countries only, such as US, Canada, Central America)
Country of origin	France - European Union
Warranty	1 year

## MEDIAWEL 50®



## ENSURE COMPLETE TRACEABILITY WITH YOUR MEDIAWEL



**FULL  
TRACEABILITY**

### REAL TIME DATA MONITORING :

Labpage® Real time data monitoring through WIFI/Ethernet, connected to your PC / Smartphone / Tablet. Dashboard available for the live monitoring : program settings, temperature settings and current temperature, alarms and notifications.



### CYCLE MONITORING :

Cycles are automatically recorded and stored. Recall them one by one or sort them out by batch number, date, user... Each cycle can be exported as a PDF or CSV file to your USB key. SD card included with up to 10 000 cycles data storage.



# DISTRIWEL 440<sup>®</sup>

NEW GENERATION PETRI DISH FILLER

## **High performances :**

- Walkaway device :  
880 dishes in 1 hour
- Dispensing accuracy +/- 1ml
- High production throughput
- Built-in Peltier cooling effect :  
reduces condensation  
and solidification time
- Compatible with 55 & 90 mm Petri dishes
- In-line blood addition (option)
- Plate Pouring System (option)

## **Ergonomic :**

- Designed for user comfort
- User friendly interface
- Integrated bubble level
- Easy cleaning

## **Secure process :**

- UV lamp for aerobiocontamination  
prevention
- Plexiglas cover
- Multicolored visual alarm








## Enhanced productivity

Fills 880 Petri dishes in 1 hour  
Full walkaway device



## 55mm Petri dish

The 55 version of the DISTRIWEL 440 is specifically designed to fill your 55 mm diameter Petri dishes, the standard size for microbiological water analysis. 



## Plate Pouring System

No more manual 8-shaped stirring with optional «Plate Pouring» mode




## Secure process

Avoid aerobiocontamination thanks to the UV lamp and plexiglas cover



## Touchscreen

Operating system dedicated to microbiologists, for a reactive and intuitive access to programs 



## Inkjet Printer



Print up to 15 characters (2 lines) on the side of the Petri dish with the LINX 8900 / DOMINO AX150 (optional)

**Delivered with the DISTRIWEL :** User Manual, Power supply cable, Tubing sets x2 (DISW2005), Certificate of conformance, FHC screws, Stainless steel washers M4 x6, Stainless steel washers M5 x6, Linx printer fitting kit (only in DISW1003)

## TECHNICAL DATA SHEET

Petri dishes per hour	Up to 880
Distribution modes	Automatic with carousel and manual
Capacity	440 Petri dishes
Fast cooling	Built-in Peltier effect
Contamination prevention	Built-in UV lamp
Distribution speed	From 30 to 300 RPM
Distribution accuracy	± 1ml
Distribution volume	1 - 99ml
Stack plates function	✓
Peristaltic pump	Integrated pump (double pump in option)
Programs	150
Touchscreen	Tactile, LCD 7" glove friendly
Traceability	Ink jet printer on the Petri dish sides (also possible from the bottom of the dish, on demand)
USB	✓
Ethernet	✓
Footswitch (for manual distribution)	✓ (option)
Dimensions (L x W x H)	808 x 689 x 940 mm
Weight	48 kg
Power supply	115 or 230V ±10% - 50/60Hz - 3A max - 150W
Country of origin	France - European Union
Warranty	1 year

## CONFIGURATIONS

DISW1001P	Distriwel with blood addition kit
DISW1001X	Distriwel with LINX printer kit
DISW1001XP	Distriwel with blood addition + LINX printer kit
DISW1001S	Distriwel with plate pouring system

**DISTRIWEL®**





# MINIMA<sup>®</sup>

PETRI DISH WRAPPER

## ***Pack your Petri dishes :***

- Adequate film : optimal solution to avoid condensation
- 10 predefined programs
- Ideal for 10-plates packs :  
**1 column of 10 or 2 columns of 5**



## TECHNICAL DATA SHEET

**Wrapping film (purchased separately)** Polyolefin rolls delivered by 6 rolls of 1250m - 15µm - ø 200mm

**Power supply** 200/230V - 1.2 KW

**Dimensions with open lid** 930 x 550 x 580 mm

**Dimensions with closed lid** 930 x 550 x 370 mm

**Weight (net/gross)** 36/48 kg



**Order it with your DISTRIWEL<sup>®</sup>**





DOSYWEL UP! is a multi-functional compact peristaltic pump, that provides a quick and accurate way of filling containers with agar, and any diluents.

- ✓ Precise
- ✓ Time saving
- ✓ Standardized
- ✓ Automatic traceability
- ✓ Lightweight and user-friendly

**Step up your lab with automation !**

1

**Prepare the media or diluent**

MEDIWEL®



ISO  
11133

4.5.4 : The medium shall be poured into Petri dishes so as to obtain a depth of at least 3 mm. For 90 mm diameter dishes, 18 ml to 20 ml of medium are required.

2

**Distribute the media or diluent**

DOSYWEL®



ISO  
7218

Culture media shall be distributed in a clean and uncontaminated environment. Use distribution methods that minimize the risk of contamination [...] The preparation conditions (temperature, stirring, etc.) must be controlled and documented.

# DOSYWEL UP!®

## NEW GENERATION PERISTALTIC PUMP

 StepUpYourLab

### **Multi-modes :**

- Dosing (with defined volume)
- Multidose (with intervals), Footpedal or Hand dispenser
- Dispense with a fixed flow rate (for ex: 1L/min)
- Continuous distribution (Start/Stop)
- Concentrated media management
- Fast mode with 8mm tubing

### **Ergonomic :**

- User friendly interface
- Light : 3.1kg



ISO  
7218

ISO  
11133

ISO  
6887-1



CE







## Semi-automatic distribution

Set up your lab to gain in efficiency. Use a time interval, a footswitch or a hand dispenser to limit handling



## Compact & light



Light weight (3.1kg) and small footprint : optimise your bench space and easily lift it for cleaning



## Calibration



Set up a calibration at the beginning of your program or after a defined number of doses dispensed to ensure a perfect distribution precision



## Touchscreen



Operating system dedicated to microbiologists, for a reactive and intuitive access to programs

## Fast & Accurate

Up to 1 second for 9ml with 98% accuracy using 3.2mm tubing



## Upgradeable



Need to scale up your production ? Boost efficiency : simply plug your DOSYWEL UP to the POLYWEL UP!

### Delivered with the DOSYWEL UP!

User Manual, power chord, set of 3.2mm tubing with dispensing nozzle (ref : DOSW2003), quality control certificate and metrology report.

## TECHNICAL DATA SHEET

Distribution	Manual, automatic, with footswitch or hand dispenser
Adjustable volume	1 to 9999.9 mL
Adjustable speed	5 - 100% / 10-450 rpm
Calibration	At the beginning of a cycle and/or after a selected number of doses
Dispensing modes	Dosing - Continuous - Flow rate
Interval	0.1 to 100 seconds
Rotation	Clockwise or Anticlockwise
Number of programs	Unlimited
Traceability	Ticket printer - USB key
Flow rate	1.8L / min maximum
Internal tube diameter	1.6mm / 3.2mm / 4.8 mm / 6.4mm / 8mm
Compacity (L x W x H)	160 x 253 x 250 mm
Weight	3.1kg
Electricity supply / Power	100 - 250V / 50 - 60 Hz / 120W
Warranty	1 year
Country of origin	France - European Union

# DOSYWEL UP!®

Set up your workflow with a **footswitch** :



REF : DILW2013

Work easily  
with the **hand dispenser** :



REF : DOSW2203



1

## Prepare the media

Diluent & Agar

MEDIAWEL®



Compliant with :

ISO  
11133

ISO  
7218

GMP

**ISO 7218 - 5.7.1** : A media preparator is primarily designed for the sterilization of large volumes of media (>1L). It consists of a heating vessel, a water jacket, and a continuous agitation device [...] and is equipped with a thermometer, a pressure gauge, a timer, and a safety valve [...] with a safety lock to prevent opening above 80°C.

2

## Dispense the media

Diluent & Agar

DISTRIWEL® - POLYWEL® - DOSYWEL® - DILUWEL®



## UPGRADE YOUR DOSYWEL UP!

**Need to scale up your production?**

*Boost efficiency with automated media dispensing :*

Simply plug your DOSYWEL UP! to the POLYWEL UP!



# POLYWEL UP<sup>®</sup>

AUTOMATED TUBES AND BOTTLES FILLER

## High performances :

- Capacity : more than 1000 tubes (ø18mm) or 40 bottles (1L - ø 100mm)
- Fills 1000 tubes in 30 minutes (9ml tubes)
- Accuracy : 98%
- Adapted to all types of containers (tubes, bottles, jars...)
- Unlimited programs

## Ergonomic :

- Autoclavable racks
- Light indicators
- Easy cleaning

## Adaptable :

- Use your own racks
- Different distribution nozzles available :

ø 1.6mm - ø 3.2mm - ø 6.4mm - ø 8mm

ACCURACY → SPEED





## Enhanced productivity

Fills 1000 tubes in 30 minutes  
in stand-alone mode.

Full walkaway device



## Adaptable

The automated arm height  
is adjustable and will adapt  
to different container sizes



## Precise distribution



Dispense with an accuracy of  
98% thanks to the device's  
calibration



## High-quality racks



Take advantage of autoclavable  
racks to be loaded directly from  
its original package

## Easy cleaning



The surface of the device is made of  
stainless steel, which is easy to clean



## Light indicators



Be easily informed of the end  
of the cycle with the flashing lights  
on the sides of the device

### Delivered with :

#### **POLYWEL UP! - Ref : POLW1201**

*User manual, power chord, set of tubing 3.2 mm with dispensing nozzle (POLW2008), Large Rack (POLW2002)*

#### **POLYWEL UP! + DOSYWEL UP! BUNDLE - Ref : POLW1201D**

*POLYWEL UP! (POLW1201), User manual, power chord, set of tubing 3.2 mm with dispensing nozzle (DOSW2003)*

## TECHNICAL DATA SHEET

Dispensing volume	From 1 to 9999.9ml
Adjustable speed	5 - 100% / 10-450 rpm
Dispensing time for 1000 tubes (9ml)	30 minutes
Tubes per rack (Ø18mm)	Large rack : 250 Small rack : 120
Number of programs	Unlimited
Tubing diameters	1.6 mm / 3.2 mm / 6.4 mm
Flow rate	1.2 L/min maximum (in POLYWEL UP mode)
Calibration	At the beginning of a cycle and/or after a selected number of doses
Maximum size of containers	Height : 223 mm
External dimensions of racks (L x W x H)	<b>Large rack :</b> 440mm x 220mm x 110 mm / <b>Small rack :</b> 240mm x 220mm x 110mm
Internal dimensions of racks (L x W)	<b>Large rack :</b> 390mm x 195mm / <b>Small rack :</b> 190mm x 190mm
Dimensions POLYWEL UP! (L x W x H)	1150mm x 605mm x 620mm
Power supply POLYWEL UP!	120 - 240V (± 10 %) 50 - 60 Hz / 120W
Power supply DOSYWEL UP!	120 - 240V (± 10 %) 50 - 60 Hz / 120W
Warranty	1 year
Country of origin	France - European Union

# POLYWEL UP!®









## PRODUCT CODE AND DESCRIPTION

<b>DSHB3001</b>	TRYPTIC SOY AGAR - TSA - 500G	<b>DSHB3021</b>	D-CYCLOSERINE SELECTIVE SUPPLEMENT - 10 x 250ML
<b>DSHB3002</b>	TRYPTIC SOY BROTH TSB - 500G	<b>DSHB3022</b>	DEOXYCHOLATE LACTOSE AGAR - 500G
<b>DSHB3003</b>	SABOURAUD DEXTROSE AGAR - SDA - 500G	<b>DSHB3023</b>	KLIGER AGAR - 500G
<b>DSHB3004</b>	BUFFERED PEPTONE WATER PH7 - BPW - 500G	<b>DSHB3025</b>	MULLER-KAUFFMANN TETRATHIONATE BROTH BASE - 500G
<b>DSHB3005</b>	UREA AGAR - 500G	<b>DSHB3026</b>	ENRICHMENT ENTEROBACTERIACEAES BROTH - EE - 500G
<b>DSHB3006</b>	UREA SUPPLEMENT 40% - 1 x 125ML	<b>DSHB3027</b>	MRS AGAR (MAN, ROGOSA AND SHARPE) - 500G
<b>DSHB3007</b>	MAC CONKEY AGAR - 500G	<b>DSHB3028</b>	MYP BACILLUS CEREUS AGAR BASE - 500G
<b>DSHB3008</b>	MAC CONKEY BROTH ISO/EUR.PHARMA - 500G	<b>DSHB3029</b>	GLUCOSE BROMOCRESOL PURPLE AGAR - 500G
<b>DSHB3009</b>	R2A AGAR - 500G	<b>DSHB3030</b>	OXYTETRACYCLIN GLUCOSE YEAST EXTRACT AGAR BASE - OGYE - 500G
<b>DSHB3010</b>	CETRIMIDE AGAR PSEUDOMONAS SELECTIVE - 500G	<b>DSHB3031</b>	OXFORD AGAR BASE - 500G
<b>DSHB3011</b>	YLOSE LYSINE DEOXYCHOLATE MODIFIED AGAR - 500G	<b>DSHB3032</b>	PALCAM AGAR BASE - 500G
<b>DSHB3012</b>	CHAPMAN MANNITOL SALT AGAR - MSA - 500G	<b>DSHB3033</b>	BOLTON ENRICHMENT BROTH BASE - 500G
<b>DSHB3013</b>	NUTRIENT AGAR - 500G	<b>DSHB3034</b>	PLATE COUNT AGAR - PCA - 500G
<b>DSHB3014</b>	ESCHERICHIA COLI BROTH - 500G	<b>DSHB3035</b>	POTATO DEXTROSE AGAR (EUR. PHARM.) - PDA - 500G
<b>DSHB3015</b>	RILLIANT GREEN BILE 2% BROTH - 500G	<b>DSHB3036</b>	SABOURAUD BROTH - 500G
<b>DSHB3016</b>	BRAIN HEART INFUSION AGAR - BHI - 500G	<b>DSHB3037</b>	SABOURAUD CHLORAMPHENICOL AGAR - SDA WITH CHLORAMPHENICOL - 500G
<b>DSHB3017</b>	BLOOD AGAR BASE COLUMBIA - 500G	<b>DSHB3038</b>	TRYPTONE BILE GLUCURONIC AGAR - TBX - 500G
<b>DSHB3018</b>	LISTERIA ENRICHMENT BROTH FRASER BASE - 500G	<b>DSHB3039</b>	TCBS AGAR (ISO) - 500G
<b>DSHB3019</b>	RPF SUPPLEMENT - 10 x 60MM	<b>DSHB3040</b>	THIOGLYCOLATE BROTH (USP ALTERNATIVE) - 500G
<b>DSHB3020</b>	PSEUDOMONAS SELECTIVE SUPPLEMENT - CFC - 10 x 500ML	<b>DSHB3041</b>	0,1% PEPTONE SALT BROTH - 500G



## PRODUCT CODE AND DESCRIPTION

<b>DSHB3042</b>	TRYPTOSE SULFITE CYCLOSERINE AGAR - TSC - 500G	<b>DSHB3062</b>	PSEUDOMONAS GELOSE BASE AGAR - 500G
<b>DSHB3043</b>	VIOLET RED BILE GLUCOSE AGAR - VRBG (EUR.PHARMA) - 500G	<b>DSHB3063</b>	ALCALIN SALTY PEPTON WATER - 500G
<b>DSHB3044</b>	VIOLET RED BILE LACTOSE AGAR - VRBL - 500G	<b>DSHB3065</b>	POLYMYXIN B SELECTIVE SUPPLEMENT - 10 x 3G
<b>DSHB3045</b>	CHLORAMPHENICOL GLUCOSE AGAR - CGA - 500G	<b>DSHB3066</b>	OXYTETRACYCLIN SELECTIVE SUPPLEMENT - 10 x 3G
<b>DSHB3046</b>	BILE ESCULIN AZIDE AGAR - BEA - 500G	<b>DSHB3067</b>	LISTERIA SELECTIVE AGAR BASE - AL - 500G
<b>DSHB3047</b>	ENDO AGAR BASE - 500G	<b>DSHB3068</b>	BUFFERED CHARCOAL YEAST EXTRACT AGAR BASE - BCYE - 500G
<b>DSHB3048</b>	BRUCELLA BASE BROTH - 500G	<b>DSHB3069</b>	CYSTEINE LEGIONELLA SUPPLEMENT FOR BCYE AGAR - 5 VIALS
<b>DSHB3049</b>	FRASER SELECTIVE SUPPLEMENT - 10 x 500ML	<b>DSHB3070</b>	SELECTIVE SUPPLEMENT LEGIONELLA WITHOUT CYSTEINE - GVPC - 10 x 9G
<b>DSHB3050</b>	FRASER DEMI SELECTIVE SUPPLEMENT - 10 x 250ML	<b>DSHB3071</b>	SELECTIVE SUPPLEMENT FOR LISTERIA (OTTAVIANI & AGOSTI) - 10 x 3G
<b>DSHB3051</b>	OXFORD LISTERIA SELECTIVE SUPPLEMENT - 10 x 500ML	<b>DSHB3072</b>	SELECTIVE SUPPLEMENT FOR LISTERIA (OTTAVIANI & AGOSTI) - 10 x 24ML
<b>DSHB3052</b>	PALCAM SELECTIVE SUPPLEMENT - 10 x 500ML	<b>DSHB3073</b>	SLANETZ AND BARTLEY AGAR BASE - 500G
<b>DSHB3053</b>	BOLTON BROTH SELECTIVE SUPPLEMENT - 10 x 500ML	<b>DSHB3074</b>	TTC SUPPLEMENT - 1 x 100ML
<b>DSHB3054</b>	MUELLER HINTON AGAR - MH - 500G	<b>DSHB3075</b>	CYSTINE LACTOSE ELECTROLYT DEFICIENT AGAR - CLED - 500G
<b>DSHB3055</b>	RAPPAPORT VASSILIADIS SOJA BROTH - RVS - 500G	<b>DSHB3076</b>	GROWTH PROMOTION SUPPLEMENT - 5 VIALS
<b>DSHB3056</b>	COLUMBIA AGAR BASE (EUR. PHARM.) - 500G	<b>DSHB3077</b>	PLATE COUNT SKIM MILK AGAR - 500G
<b>DSHB3057</b>	MALT AGAR - 500G	<b>DSHB3078</b>	AB SELECTIVE SUPPLEMENT FOR LEGIONELLA - 10 VIALS
<b>DSHB3058</b>	LACTOSE SULFITE BROTH - 500G	<b>DSHB3079</b>	HEKTOEN ENTERIC AGAR - 500G
<b>DSHB3059</b>	NOVOBIOCIN SELECTIVE SUPPLEMENT - 10 x 500ML	<b>DSHB3080</b>	DIFFERENTIAL SUPPLEMENT FOR LISTERIA UVM II - 10 x 3G
<b>DSHB3060</b>	BAIRD PARKER AGAR BASE - 500G	<b>DSHB3081</b>	D-CYCLOSERINE SELECTIVE SUPPLEMENT - 10 VIALS
<b>DSHB3061</b>	SUPPLEMENT EGG YOLK FOR BAIRD PARKER AGAR - 1 x 100ML	<b>DSHB3082</b>	YEAST EXTRACT AGAR (ISO 6222) - 500G



## PRODUCT CODE AND DESCRIPTION

<b>DSHB3083</b>	BLOOD AGAR BASE - 500G	<b>DSHB3103</b>	ENTEROBACTER SAKAZAKII ISOLATION AGAR - 500G
<b>DSHB3084</b>	LACTOSE TERGITOL 7 AGAR - TTC - 500G	<b>DSHB3104</b>	SIMMONS CITRATE AGAR - 500G
<b>DSHB3085</b>	SALMONELLA SHIGELLA AGAR - SS - 500G	<b>DSHB3105</b>	LAURYL TRYPTOSE SULFATE BROTH - LST - 500G
<b>DSHB3086</b>	THIOGLYCOLATE FLUID MEDIUM (ACCORDING TO USP) - 500G	<b>DSHB3106</b>	VANCOMYCIN SELECTIVE SUPPLEMENT - 10 x 3G
<b>DSHB3087</b>	CHROMOGENIC AGAR FOR COLIFORM BACTERIA - CCA - 500G	<b>DSHB3107</b>	CHARCOAL CEFOPERAZONE DEOXYCHOCOLATE AGAR MODIFIED - CCDA - 500G
<b>DSHB3088</b>	DICHLORAN GYCEROL 18 AGAR BASE - DG18 - 500G	<b>DSHB3108</b>	YERSINIA SELECTIVE AGAR BASE - 500G
<b>DSHB3089</b>	DICHLORAN ROSE BENGAL CHLORAMPHENICOL AGAR - DRBC - 500G	<b>DSHB3109</b>	YERSINIA SELECTIVE SUPPLEMENT - 10 x 50MM
<b>DSHB3090</b>	ORANGE SERUM AGAR - 500G	<b>DSHB3110</b>	CAMPYLOBACTER CCDA SELECTIVE SUPPLEMENT - 10 VIALS
<b>DSHB3091</b>	CN SELECTIVE AGAR BASE FOR PSEUDOMONAS - 500G	<b>DSHB3111</b>	EOSIN METHYLENE BLUE AGAR - EMB - 500G
<b>DSHB3092</b>	SUPPLEMENT FOR CN SELECTIF AGAR - 10 x 3G	<b>DSHB3112</b>	GIOLITTI CANTONI BROTH - 500G
<b>DSHB3093</b>	GREEN BRILLIANT AND NOVOBIOCIN SELECTIVE SUPPLEMENT - 10 x 3G	<b>DSHB3113</b>	YERSINIA ENRICHMENT BROTH BASE (ITC) - 500G
<b>DSHB3094</b>	MAC CONKEY BROTH - 500G	<b>DSHB3115</b>	RAPPAPORT VASSILIADIS MODIFIED SEMI SOLID AGAR BASE - 500G
<b>DSHB3095</b>	GELATIN LACTOSE MEDIUM - 500G	<b>DSHB3116</b>	SOY PEPTONE AGAR - 500G
<b>DSHB3096</b>	MOBILITY NITRATE MEDIUM - 500G	<b>DSHB3117</b>	KING A AGAR - 500G
<b>DSHB3097</b>	DECARBOXYLASE LYSINE BROTH - 500G	<b>DSHB3118</b>	LISTERIA ENRICHMENT BROTH BASE - 500G
<b>DSHB3098</b>	TRIPLE SUGAR IRON AGAR - TSI - 500G	<b>DSHB3119</b>	PEPTONE FROM CASEIN (TRYPTONE) - 500G
<b>DSHB3099</b>	KING B AGAR - 500G	<b>DSHB3120</b>	SCHAEDLER BROTH - 500G
<b>DSHB3100</b>	CHLORAMPHENICOL SUPPLEMENT - 10 VIALS	<b>DSHB3121</b>	SELENITE BROTH - 500G
<b>DSHB3101</b>	TRYPTON WATER - 500G	<b>DSHB3122</b>	DNASE AGAR - 500G
<b>DSHB3102</b>	SHIGELLA BROTH BASE - 500G	<b>DSHB3123</b>	GC AGAR ENRICHED BASE - 500G



## PRODUCT CODE AND DESCRIPTION

<b>DSHB3124</b>	MANNITOL MOTILITY NITRATE FLUID MEDIUM - 500G	<b>DSHB3147</b>	SULFITE IRON AGAR - 500G
<b>DSHB3125</b>	MAC CONKEY AGAR NO. 2 - 500G	<b>DSHB3148</b>	SUPPLEMENT EGG YOLK - 500G
<b>DSHB3126</b>	DRIGALSKY LACTOSE AGAR - 500G	<b>DSHB3149</b>	BAT AGAR - 1 x 50ML
<b>DSHB3127</b>	AGAR BACTERIOLOGICA - 500G	<b>DSHB3150</b>	D/E NEUTRALIZING AGAR BASE - 500G
<b>DSHB3128</b>	YEAST EXTRACT - 500G	<b>DSHB3151</b>	TGETRYPTONE GLUCOSE EXTRACT AGAR - TGE - 500g
<b>DSHB3129</b>	MEAT EXTRACT - 500G	<b>DSHB3153</b>	AGAR BASE BURKHOLDERIA SELECTIVE - 500G
<b>DSHB3130</b>	TRYPTONE SULFITE NEOMYCIN AGAR - TSN - 500G	<b>DSHB3154</b>	MARINE AGAR - 500G
<b>DSHB3131</b>	POLYSORBATE 80 - 1 x 125ML	<b>DSHB3155</b>	TRYPTIC SOY BROTH IRRADIATED – TSB IRRADIATED - 500G
<b>DSHB3132</b>	PEPTONE FROM CASEIN, PANCREATIC - 500G	<b>DSHB3156</b>	SUPPLEMENT SELECTIF BURKHOLDERIA CEPACIA - BCSA - 10 x 3G
<b>DSHB3133</b>	BRILLIANT GREEN MODIFIED AGAR - GVB - 500G	<b>DSHB3157</b>	BROTH BASE MODIFIED EUGON LT - 500G
<b>DSHB3134</b>	TRYPTONE AND SOY YEAST EXTRACT AGAR - TSYE - 500G	<b>DSHB3158</b>	VCAT SELECTIVE SUPPLEMENT - 10 x 10ML
<b>DSHB3135</b>	PURPLE RHAMNOSE FERMENTATION AGAR - 500G	<b>DSHB3159</b>	SELECTIVE SUPPLEMENT LISTERIA FDA FIL/IDV - 10 x 3G
<b>DSHB3136</b>	BAT BROTH - 500G	<b>DSHB3160</b>	BRUCELLA SUPPLEMENT - 10 VIALS
<b>DSHB3137</b>	KENNER FECAL AGAR - KF AGAR - 500G	<b>DSHB3161</b>	SELECTIVE SUPPLEMENT NALIDIXIC ACID - 10 x 3G
<b>DSHB3138</b>	NON ANIMAL TRYPTONE SOY BROTH - TSB - 500G	<b>DSHB3162</b>	LINDEN GRAIN BROTH - 500G
<b>DSHB3140</b>	ANTIBIOTIC MEDIUM A pH 7,9 - 500G	<b>DSHB3163</b>	MICROBIAL CONTENT TEST AGAR - 500G
<b>DSHB3141</b>	ANTIBIOTIC MEDIUM B - 500G	<b>DSHB3164</b>	TSB + LECITHIN POLYSORBATE BROTH - 500G
<b>DSHB3144</b>	ANTIBIOTIC MEDIUM E - 500G	<b>DSHB3166</b>	SELECTIVE AGAR FOR PSEUDOMONAS AND AEROMONAS - 500G
<b>DSHB3145</b>	ANTIBIOTIC MEDIUM F (OR 6) - 500G	<b>DSHB3167</b>	MULLER HINTON BROTH - MH - 500G
<b>DSHB3146</b>	ANTIBIOTIC MEDIUM A - 500G	<b>DSHB3168</b>	ROTHER BROTH - 500G





## PRODUCT CODE AND DESCRIPTION

<b>DSHB3171</b>	MALT EXTRACT - 500G
<b>DSHB3176</b>	M17 AGAR - 500G
<b>DSHB3178</b>	BRAIN HEART INFUSION BROTH - BHI - 500G



## PRE-WEIGHED FORMAT

<b>MDFW3001</b>	PRE-WEIGHED DEHYDRATED MEDIA FOR 30L OF BUFFERED PEPTONE WATER
<b>MDFW3005</b>	PRE-WEIGHED DEHYDRATED MEDIA FOR 10L OF BUFFERED PEPTONE WATER



# FOOD SAMPLE PREPARATION





DILUWEL UPI is a fast, robust & accurate gravimetric dilutor, that dilutes solid samples with the correct amount of diluent in few seconds.

- ✓ Stable
- ✓ Precise
- ✓ Standardized
- ✓ Time saving
- ✓ Automatic traceability

Step up your lab with automation !

1

Connect to your diluent



2

Dilute the sample



3

Blend the sample



ISO  
6887-1

Weigh the test take with a tolerance of  $\pm 5\%$  in a sterile container [...]. Add a quantity of diluant equal to  $9 \times \text{MG}$  or  $9 \times \text{VmL}$  [...] this quantity must be measured in mass, with a tolerance of  $\pm 2\%$  [...].

ISO  
7218

Gravimetric dilutors consist of a balance and programmable liquid dispenser [...] Place the equipment on a stable horizontal surface [...] levelled and protected from vibration.

# DILUWEL UP!®

## NEW GENERATION GRAVIMETRIC DILUTOR

 StepUpYourLab

### **High performances :**

- Fast dispensing : 12 seconds for 225 ml
- Integrated digital bubble level for better stability
- Deported pumps for space optimisation and limitation of vibrations
- Motorized dispensing :  
no cross contamination

### **Ergonomic :**

- Designed for user comfort
- User friendly interface
- Easy cleaning
- Light : 6.9kg

### **Multi-modes :**

- Dilution
- Dosage
- Powder
- Pre - weighing
- Concentrated media
- Supplements







## Fingerstop™

Long nozzle with safety ball to avoid cross contamination from hands



## Easy to handle

Light weight (6.9kg) and small footprint : easy to lift for cleaning and free up bench space



## Color indicators



Intuitive color codes for ISO conformity : adjustable values for sample weighting and final dilution tolerance



## Independant pumps



The balance stability is protected from pump vibrations. Organize your working space as you want. Up to 4 pumps !

## Ergonomic



Lowest bag opening at 29cm from the bench. Information display at eye level and commands within hand reach to avoid musculoskeletal disorders



## Full Traceability



Get the full traceability of dilutions, daily checks and calibration with tickets, USB key, Labpage or LIMS

### Delivered with the DILUWEL UP!

User Manual, power chord, Dilupump Up! (DILW2201), complete set of 6.4mm tubing with fingerstop dispensing nozzle (DILW2002), Patawel + : long life non-sticky pads (DILW3010), 400ml bag holder (DILW2034), quality control certificate and metrology report.

## TECHNICAL DATA SHEET

Fast & accurate dispensing	12 sec. for 225ml / (9 sec in turbo mode)
Dilution accuracy	>99%
Turbo mode	✓
Digital bubble level	✓
Motorized dispensing nozzle	✓
Editable programs	Unlimited
Weighing range	0.1g to 4000g
Dilution factor	1.00 to 99
Dispensing modes	Dilution / Dosage / Concentrated Media
Additional functionalities	Powder / Pre-weighing / Auto-start / Supplement
Stainless steel bag holder – extended lifetime	✓
Watertight base – easy to clean	✓
Traceability	Tickets, USB key, Labpage or LIMS
Plug and play removable pumps	4
Intuitive 3.5" touchscreen	✓
Compacity (L x W x H)	250 x 275 x 400mm
Weigh	6.9 kg
Electricity supply / Power	100 - 240V / 50 - 60 Hz / 120W
Warranty	1 year
Country of origin	France - European Union

# DILUWEL UP!®

Connect up to **4 pumps** :



## PRODUCT CODE AND DESCRIPTION

<b>BGWR3001</b>	BUFFERED PEPTONE WATER - 2 X5L
<b>BGWR3002</b>	BUFFERED PEPTONE WATER - 3 X 3L
<b>BGWR3005</b>	HALF FRASER - 2 X5L
<b>BGWR3006</b>	HALF FRASER - 3 X 3L
<b>BGWR3009</b>	MAC CONKEY - 2 X5L
<b>BGWR3010</b>	MAC CONKEY - 3 X 3L
<b>BGWR3011</b>	EUGON LT 100 - 2 X5L
<b>BGWR3012</b>	EUGON LT 100 - 3 X 3L
<b>BGWR3013</b>	PHOSPHATE BUTTER (BUTTERFIELD) - 2 X5L
<b>BGWR3014</b>	PHOSPHATE BUTTER (BUTTERFIELD) - 3 X 3L
<b>BGWR3015</b>	HALF FRASER (WITHOUT FERRIC AMMONIUM CITRATE) - 2 X5L
<b>BGWR3016</b>	HALF FRASER (WITHOUT FERRIC AMMONIUM CITRATE) - 3 X 3L
<b>BGWR3017</b>	TRYPTIC SOY BROTH - 2 X5L
<b>BGWR3018</b>	TRYPTIC SOY BROTH - 3 X 3L
<b>BGWR3019</b>	PEPTONE WATER (0.1% PEPTONE) - 2 X5L
<b>BGWR3020</b>	PEPTONE WATER (0.1% PEPTONE) - 3 X 3L
<b>BGWR3025</b>	5 SODIUM CITRATE - 2 X5L
<b>BGWR3026</b>	5 SODIUM CITRATE - 3 X 3L
<b>BGWR3029</b>	DOUBLE BUFFERED PEPTONE WATER - 2 X5L
<b>BGWR3031</b>	LISTERIA ENRICHMENT BROTH (UVM I) - 3 X 3L







**Step up your lab with automation !**

- ✓ Easy to use
- ✓ Compact and light
- ✓ Standardized extraction
- ✓ Silent and vibration free
- ✓ More efficient blending<sup>1</sup>

1

**Connect** to your diluent



2

**Dilute** the sample

DILUWEL UP®



3

**Blend** the sample

MIXWEL UP®



ISO  
7218

The usual operating time of a peristaltic homogenizer is 1 min to 3 min (see ISO 6887-2 to ISO 6887-4 and ISO 8261 for specific foods).

<sup>1</sup> : See the scientific report on page 42



# MIXWEL UP!®

## NEW GENERATION LAB BLENDER

 StepUpYourLab

### **Best performances<sup>1</sup> :**

- Adjustable paddles to adapt to your matrices
- Pendular blending system
- Silent and vibration free
- Speed control

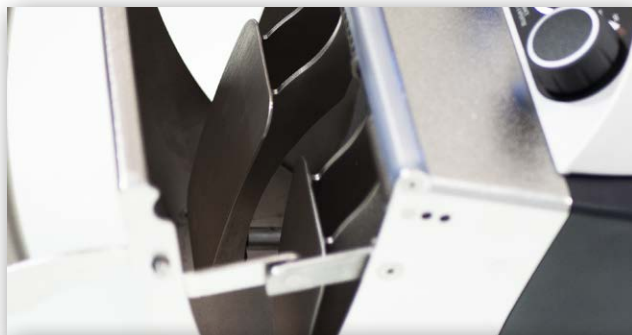


### **Ergonomic :**

- Designed for user comfort
- User friendly controls
- Easy cleaning
- Light : 14 kg
- Optimized footprint

<sup>1</sup> : See the scientific report on page 42





## Pendular system



More efficient blending with our pendular patented system : delivers smoothly up to 70 kg pressure per paddle.

## Easy to clean



Quick removal of the door and the paddles. Waste tank integrated into the door



## Compact & light



Lightest lab blender : 14 kg.  
Easy to move to optimise your bench space

## 1.COMPARATIVE STUDY BETWEEN TWO BLENDING METHODS :

To compare the two different types of lab blenders on the market, we asked ESIAB, a food industry school of Engineering, to perform a number of tests :

An *E.coli* strain calibrated at 7400 cfu, is inoculated into « knack » sausages: a sensitive matrix due to the « slippery » skin. The sausages were then grinded in the two blenders and inoculated into TBX agar.

The MIXWEL pendular system resulted in a 50% higher recovery rate than a classic blender.

### Pendular system

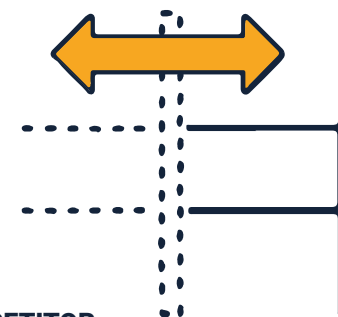
Pressure : up to 70kg



MIXWEL

### Classical system

Pressure : up to 28kg



COMPETITOR

**Delivered with the MIXWEL UP!**

*User Manual, power chord, quality control certificate and metrology report.*

## TECHNICAL DATA SHEET

Pendular blending power	Up to 70 kg / paddle
Capacity	50 mL to 400 mL
Noise level	< 46 db
Adjustable speed	✓
Low vibrations	✓
Removable door / paddles	✓
Stainless steel paddles	✓
Adjustable paddles to the matrix	3 positions
Waste tank integrated – easy to clean	✓
Easy troubleshooting	Light indicators
Compacity (L x W x H)	220 x 410 x 340mm
Weight	14 kg
Electricity supply / Power	100 - 240V / 50-60 Hz - 120W
Warranty	1 year
Country of origin	France - European Union

# MIXWEL UP!®

Set up your workflow with a **bag rack** :

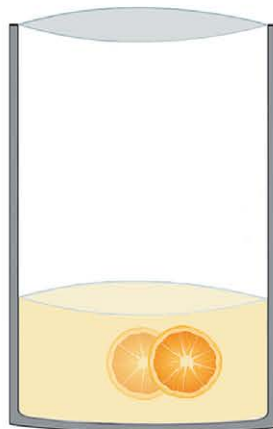


**REF : MIXW2002**

# MIXBAGS®

STERILE BLENDER BAGS

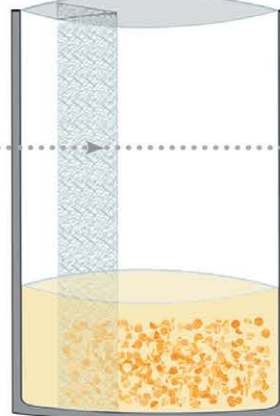
**MIXBAG** Standard



REF : GR50150

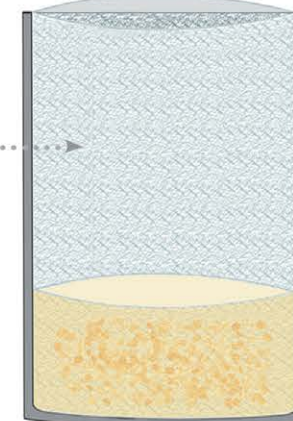
**MIXBAG** Side Filter

Filter porosity  
< 250 µm



REF : MIXW3009

**MIXBAG** Full Filter

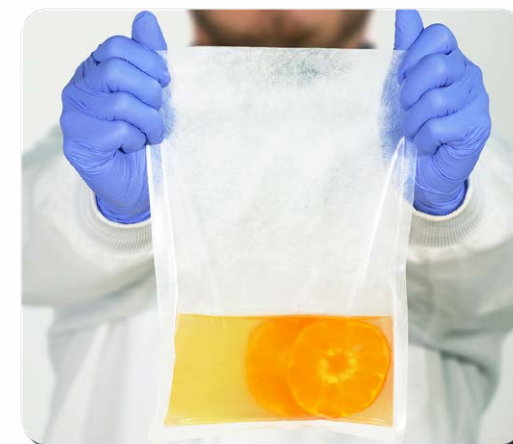


REF : MIXW3010



Easy pipetting process

	<b>MIXBAG</b> Standard	<b>MIXBAG</b> Side Filter	<b>MIXBAG</b> Full Filter
<b>Reference</b>	GR50150	MIXW3009	MIXW3010
<b>Volume</b>	400ml	400ml	400ml
<b>Material</b>	Polyethylene (PE)	Polyethylene terephthalate (PET) / Polyethylene (PE)	
<b>Filter</b>	N/A	Non-woven – porosity: < 250 µm	
<b>Sterility</b>	By irradiation	By irradiation	By irradiation
<b>Unit per pack</b>	50 bags	50 bags	50 bags
<b>Bag per box</b>	1000 bags	750 bags	750 bags
<b>Dimensions (L x H)</b>	190 mm x 285 mm	190 mm x 300 mm	190 mm x 300 mm
<b>Thickness</b>	0.07 mm	0.072 mm	0.072 mm



Sterilized by irradiations /Food contact : compliant with FDA regulation and EU Directive n°1935/2004



# **AIR & SURFACE SAMPLING**



## **High performances :**

- Airflow : 100L/min - 200L/min
- Safety management (with passwords)
- Service available for calibration and IQ/OQ protocol
- Full traceability (GMP/GLP - Import/Export data)
- Gas adapter available

## **User-friendly :**

- Fully hermetic : IP65 dust and water protection
- Battery charger : Wireless - 30 000L autonomy
- Very light : 1.6kg
- Adaptable : 90mm & 55mm Petri dishes





## Standardised sampling

Regular and calibrated airflow  
(100 or 200L/min) on Petri dishes  
(90 mm or 55 mm contact plates)



## Easy to handle

Take it anywhere with its  
ultra-light weight of 1.6 kg  
or use an optional tripod



## Adaptable



It can be used with **Stainless Steel**  
grids, autoclavable **Polycarbonate**  
grids, or daily use grids (sterile and  
double packed)



## Remote control tablet

Launch your air sampling remotely  
and collect your data with  
the Air sampler tablet  
and the embedded app



## Gas station

Check the microbial quality of  
your gas source thanks to the  
**stainless steel** gas system (optional)



## Full Traceability



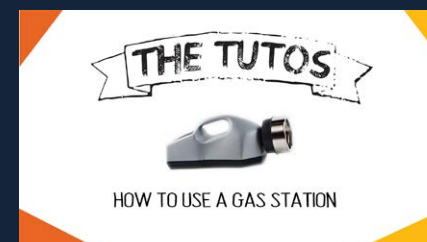
Build-in Bluetooth module, allowing  
the extraction of all the sampling  
data : Operator ID, Plate ID, volume...

**Delivered with the AIRWEL :** Charger 18V/15W (BCLO2016), Stainless steel grid, Grid cover in stainless steel (BCLO2025), Bluetooth module incorporated, light case (BCLO2014), Penguin vertical holder (BCLO2067), Screw cap cover for battery connector (BCLO2021), User Manual, Calibration certificate.

**Delivered with the AIRWEL+ :** Induction base (with selftest bench incorporated if BCLO1078-79-80-81), Stainless steel grid 90mm or 55mm (BCLO3001 or BCLO3002), Bluetooth module incorporated, Rigid transport case (BCLO2013), Grid cover in stainless steel (BCLO2025), User Manual, Calibration certificate.

TECHNICAL DATA SHEET	AIRWEL	AIRWEL+
Bluetooth module	✓	✓
PC software	✓	✓
Air sampler tablet with embedded app	✓	✓
A.B.E. or dealer calibration	✓	✓
Cascade password		✓
Wireless induction charger		✓
Battery autonomy	30 000 L	
Type of dishes	90 mm or 55 mm	
Type of heads	Stainless steel or Disposable polyester or Daily use	
Airflow	100L or 200L / min	
Transport case	Light	Rigid
Multi-mode aspirating cycles	Uninterrupted or Fragmented	
Antigerm painting	✓	✓
IP65	✓	✓
Compacity (L x W x H)	150 x 130 x 330 mm	
Weight	1.6 kg	
Power supply	120-230 V - 50-60Hz / 120 W	
Warranty	1 year	
Country of origin	France - European Union	

AIRWEL®





### ***Reproducibility of samples :***

- Sampling time : 10 seconds
- Indicator lights and vibration at the end of sampling
- Compatible with contact plates (55mm - multi-brand)
- Detergent-resistant

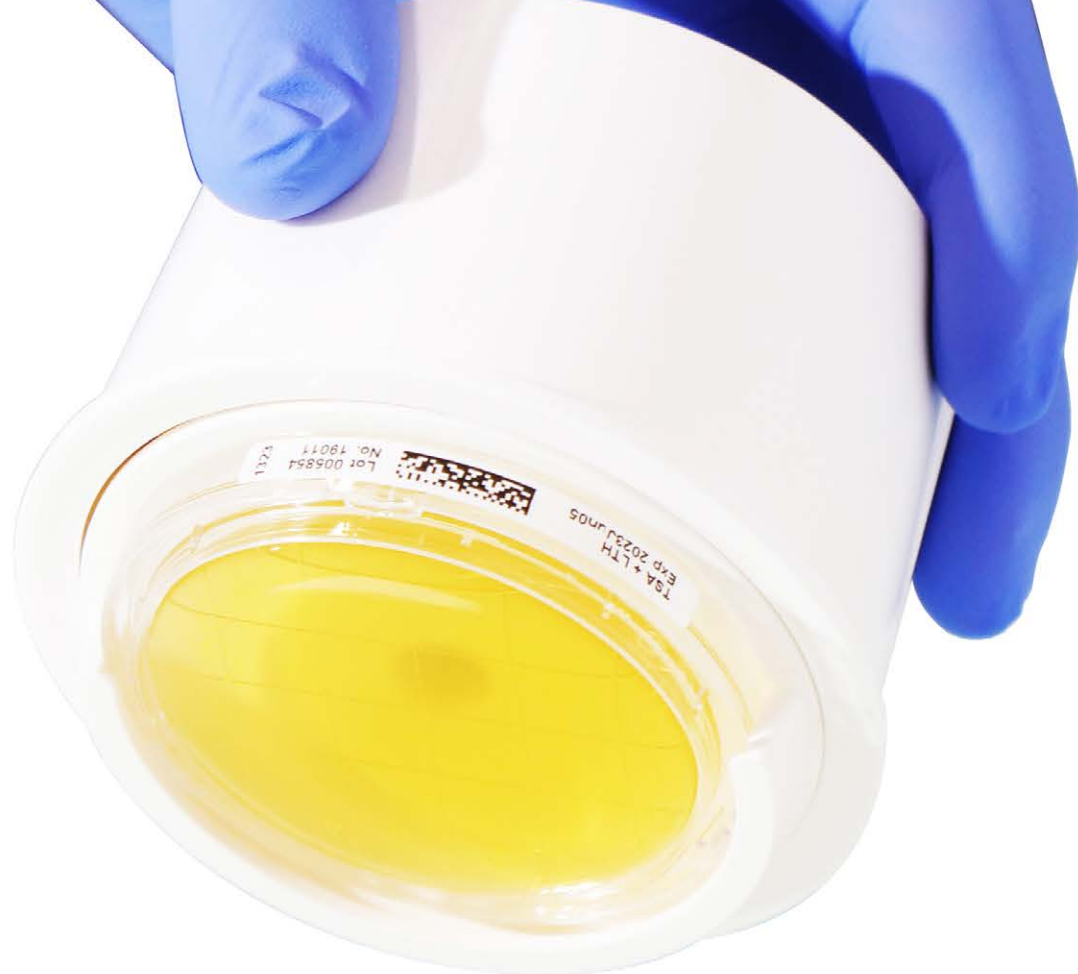
### ***Uniformity of pressure :***

- Homogeneous results across the entire agar surface
- Uniform, constant pressure 500g

### ***User friendly :***

- Simple plate clipping
- Easy to clean

***Study on recovery rates compared with manual methods, available on our website via this QR code :***



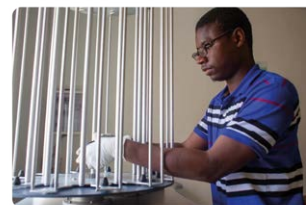
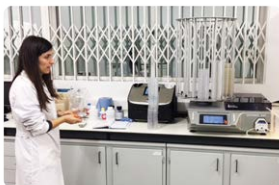
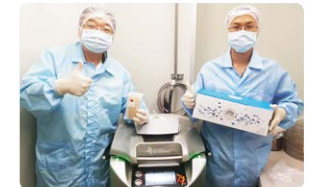
# TECHNICAL SUPPORT

- **Manufacturer's experience** : you benefit of the A.B.E. team's experience, 20 years in servicing automated laboratory equipment, with a multilingual competence !
- **Local network expertise** : your local distributor is a member of our exclusive network. Our partners were intensely trained at our premises in France but also abroad, in Europe, Asia, Africa, Middle East, and Americas. Our worldwide distributors are carefully selected for their service approach and their customer focus.
- **Availability & reactivity** : our team is reachable by email, zoom and telephone. Are you on the other side of the world ? We will do all it takes to bring you the expertise you need rapidly, and above all, relevantly !



# JOIN THE COMMUNITY

Follow A.B.E. stories all around the world :





# Do you like cinema and microbiology ?



Discover all our posters and news on LinkedIn :

LinkedIn



+ Follow



# Join the Microbiologists' YouTube Channel

## Explore the fascinating world of microbiology!

Online sessions, practical tutorials, surprising anecdotes, exclusive reports, inspiring interviews, funny videos... Whether you're a professional, a student, or simply curious, there's something for everyone!

Subscribe now to stay up to date with all our latest videos!





**EQUIPEMENT - REAGENTS - CONSUMABLES**  
**ADAPTED FOR INDUSTRIAL MICROBIOLOGY LABORATORIES**



**A CONNECTED EQUIPMENT GENERATION**  
**FOR TRACEABILITY AND PRODUCTIVITY**



**MORE THAN 90 INTERNATIONAL DISTRIBUTORS**  
**TRAINED TO THE LATEST A.B.E. TECHNOLOGIES**



**A DEDICATED AND EXPERIENCED TEAM**  
**OF SERVICE ENGINEERS AND MICROBIOLOGISTS**



**REPRESENTED IN OVER  
90 COUNTRIES**