

## Organism Directory

# *Finegoldia magna*

### Introduction

*Finegoldia magna* is the most common anaerobic coccus recovered from human clinical specimens. Common infections include soft tissue abscesses, infected sebaceous cysts, infected ulcers and pressure sores. It is found in association with *Staphylococcus aureus* giving rise to synergistic infections especially in skin ulcers in patients suffering with diabetes. Loss of the associated limb is a real danger with such infections. Rarer, but equally serious infections, include prosthetic joint infections, endocarditis, septicaemia and meningitis.

### Features

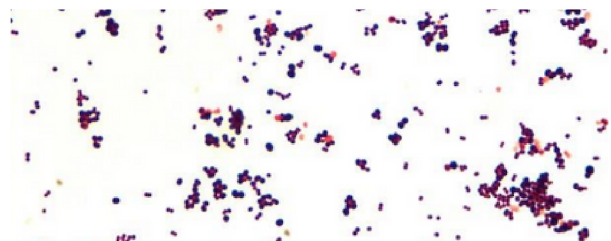
- Gram-positive cocci bacterium
- Obligate anaerobe
- 35-37 for 48-72 hours
- None-spore former
- Catalase
- Oxidase
- Colonises most parts of the body



*F. magna* at 48 hours

### Appearance

Pinpoint, circular, translucent grey colonies after 48 hours, increasing in size after five days with no colour change. They are non- $\alpha$ haemolytic.



## Practical & Clinical Microbiology of Anaerobes

Held in Cardiff and delivered by the UK Anaerobe Reference Unit, this 2-day residential course offers the chance to learn from the experts about the latest technologies and techniques. CPD accredited for 11 credits. Invaluable preparation for FRCPath.

For a more details please email:  
Bethany Rooke – [sales@dwscientific.co.uk](mailto:sales@dwscientific.co.uk)



## UKAS Calibration/Validation

DWS is accredited by UKAS to BS EN ISO/IEC 17025:2017 for:

- Temperature calibration within the range -80°C to 140°C (Autoclaves, media preparators, and incubators)
- Non-automatic weighing instrument calibration within the range 0-9kg (Gravimetric diluters and balances)

Email Sally Baines for more information  
– [service@dwscientific.co.uk](mailto:service@dwscientific.co.uk)



## Contract Laboratory

The work of our microbiology laboratories extends from routine analysis/quality control to substantial research and development programmes for major multinational pharmaceutical companies. In addition to our membership of the UK GLP compliance program, we comply with national and international standards as required, including BS / EN / ISO / ASTM test methods, BSAC, EUCAST and CLSI guidelines.

Email Dr Andrew Pridmore to discuss your requirements –  
[laboratory@dwscientific.co.uk](mailto:laboratory@dwscientific.co.uk)



## Exploring the Microbiome

Each installation is only 30 minutes long and the recordings are uploaded to our website!

Visit [www.dwscientific.com/dwswebinars](http://www.dwscientific.com/dwswebinars)  
to begin the exploration!

